



## Architects Who Live at Lake Point Tower Respond to Three Questions

### 1. What do you think is most significant about Lake Point Tower in the history of Chicago and American architecture?



**Roberta Feldman**, Professor, UIC School of Architecture

The pioneering aluminum curtain wall construction, which allowed for uninterrupted, panoramic views from every unit.

**Ken Kasten**, Kasten Architecture, Ltd.

Lake Point Tower is truly special In that few buildings ever achieve its timeless quality of design with its dynamic views to the city and lake.

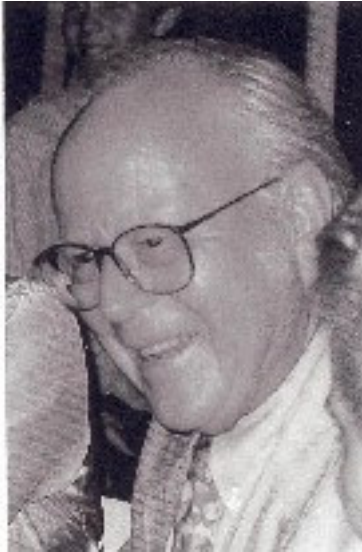
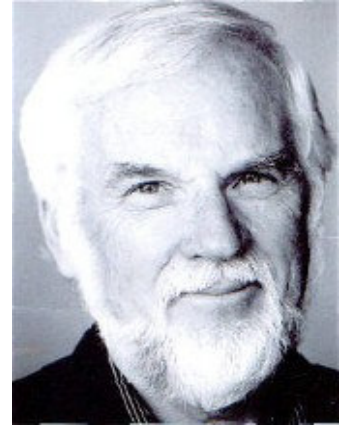


**Trish VanderBeke**, P.K. VanderBeke, Architect

Its sheer seamless beauty. Few buildings are so attractive from every angle. There is no front or back at Lake Point Tower while the roof of the building's base is a garden paradise designed by a celebrated landscape architect.

***Robert Blaich, Blaich Associates***

The curved form is as elegant as it is functional, providing unobstructed views of the city, shoreline and lake. Its singular design and construction honors Chicago's rich architectural history as well as taking its place among the best of the newest high-rise city structures.



***Deever Rockwell, retired architect and landscape architect***

Most significant is Lake Point Tower's flexibility, simplicity, consistency of structure and economy of means. LPT broke the box with authority and conviction and promise not seen before. It was no longer necessary to have square corners; the corner gave way to the curve, but within a disciplined context, offering new possibilities with grace.

**2. How important was the building's design in your decision to live at Lake Point Tower?**

***Roberta Feldman***

The building's design was key in my husband's and my decision to live at Lake Point Tower. It is the most handsome, significant highrise residential building in Chicago, and only one of a few nationally.

***Trish VanderBecke***

The decision to buy a unit in Lake Point Tower was basically economic and that old adage "location, location, location". The decision to remain at Lake Point Tower for 20 years has been based on the daily experience of living with exceptional design.

***Deever Rockwell***

Very important. Its views and park, the possibility of being IN the city without being stifled by the city.

***Robert Blaich***

The sweeping views from every vantage point made our decision to make Lake Point Tower our second home instantaneous. There was really no competition compared to the other condos we looked at. We found its enduring design, which has retained its modernism over the decades, enormously appealing.

**3. What do you as a resident and an architect appreciate most about the design of Lake Point Tower?**

***Roberta Feldman***

The curving form of the building is not only exquisite, but also provides subtle changes in the views from each unit. Our apartment, for example, allows city views at one end, lake views at the other, and Monroe Harbor in between.

***Trish VanderBecke***

The views, inside and out, the concrete column and slab construction that make it easy to create a timeless living environment. The private outdoor space of Skyline Park, all the building's amenities and its location.

***Deever Rockwell***

The quality of light, sense of spaciousness, airiness and openness in every unit.

***Robert Blaich***

We never tire of the views, not only of the lake and the city but also of the park. It was an amazing harbinger of rooftop greenery that is now becoming a Chicago model for urban landscape design.

